



The System is Greater than the Sum of the Parts

Using WSG plants to create a more
resilient and sustainable grazing program!

Presented by:

Drexel Atkisson, Area Soil Health Specialist
USDA-NRCS Springfield, Missouri
417-831-5246 Ext 6
Drexel.Atkisson@mo.usda.gov



Systems Approach to Creating Resilience and Sustainability

Using WSG plants to create a more resilient and sustainable grazing program!



It is a **SYSTEM**

Aristotle

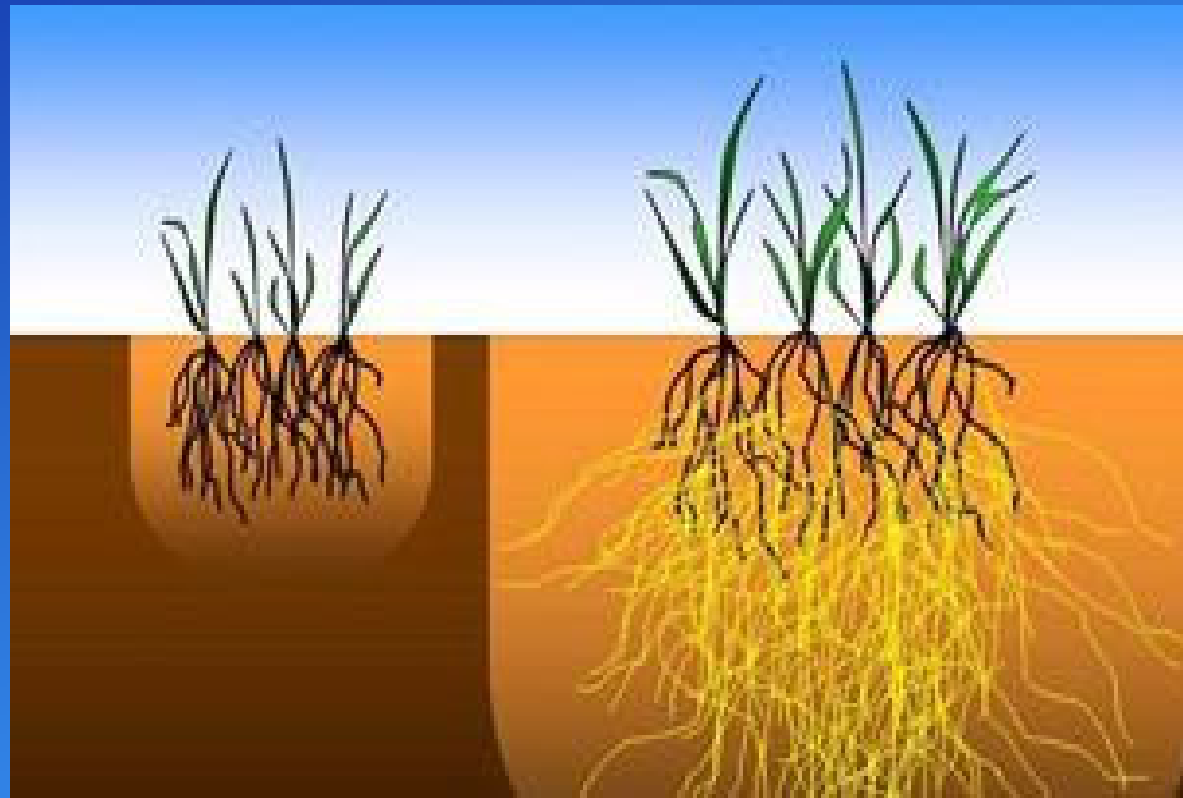
“The whole is greater than the sum of the parts”

Synergy

A system will outperform an unmanaged
monoculture

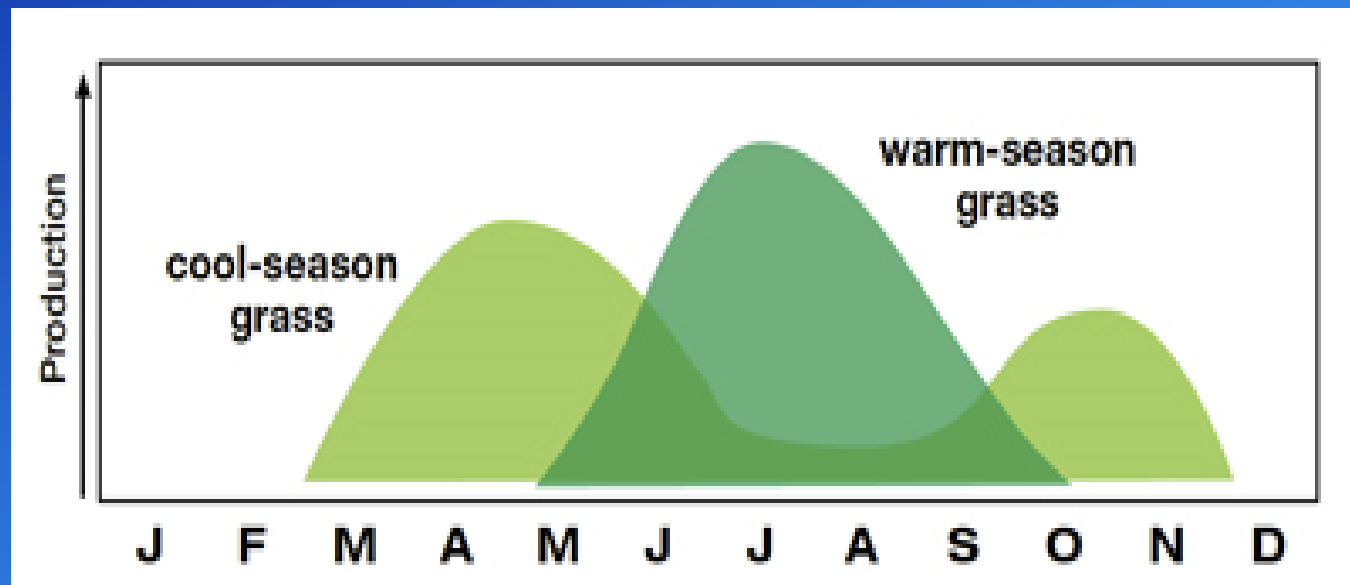


Cool Season vs Warm Season





Growing Season





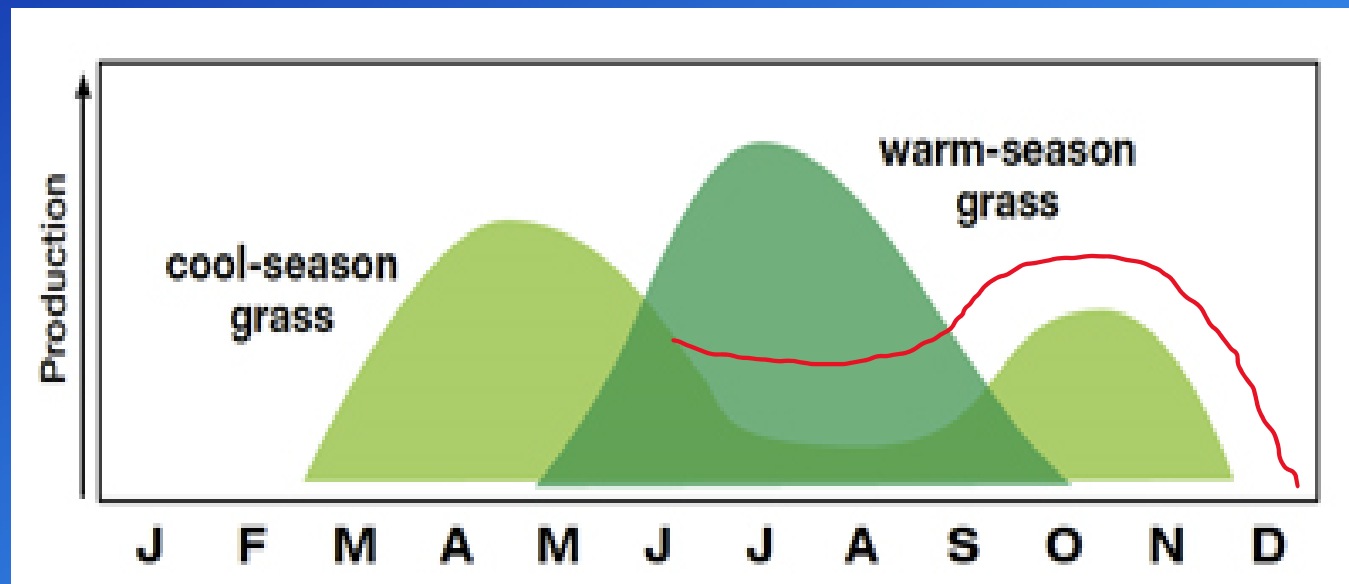
It is a **SYSTEM**

Grazing native warm-season grass until September allows for more rest during summer and causes an excited growth pattern in the fall for fescue.

This, in turn, makes it easier to stockpile forage!



Growing Season





It is a **SYSTEM**

Brown grazing natives brings an energy component to stockpiled strip grazed fescue.

This will further extend grazing days



It is a **SYSTEM**

Continuous Grazed 100 acres fescue
3000 lbs production per acre per year
75% utilization
365 day need of 1350lbs animal

16 animals



It is a **SYSTEM**

Managed Grazed 100 acres fescue
6000 lbs production per acre per year
65% utilization
365 day need of 1350lbs animal

29 animals



It is a **SYSTEM**

Managed Grazed 100 acres fescue/WSG

8000 lbs production per acre per year $\frac{2}{3}$ acres

10,000 lbs production per acre per year $\frac{1}{3}$ acres

65% utilization

365 day need of 1350lbs animal

40 animals

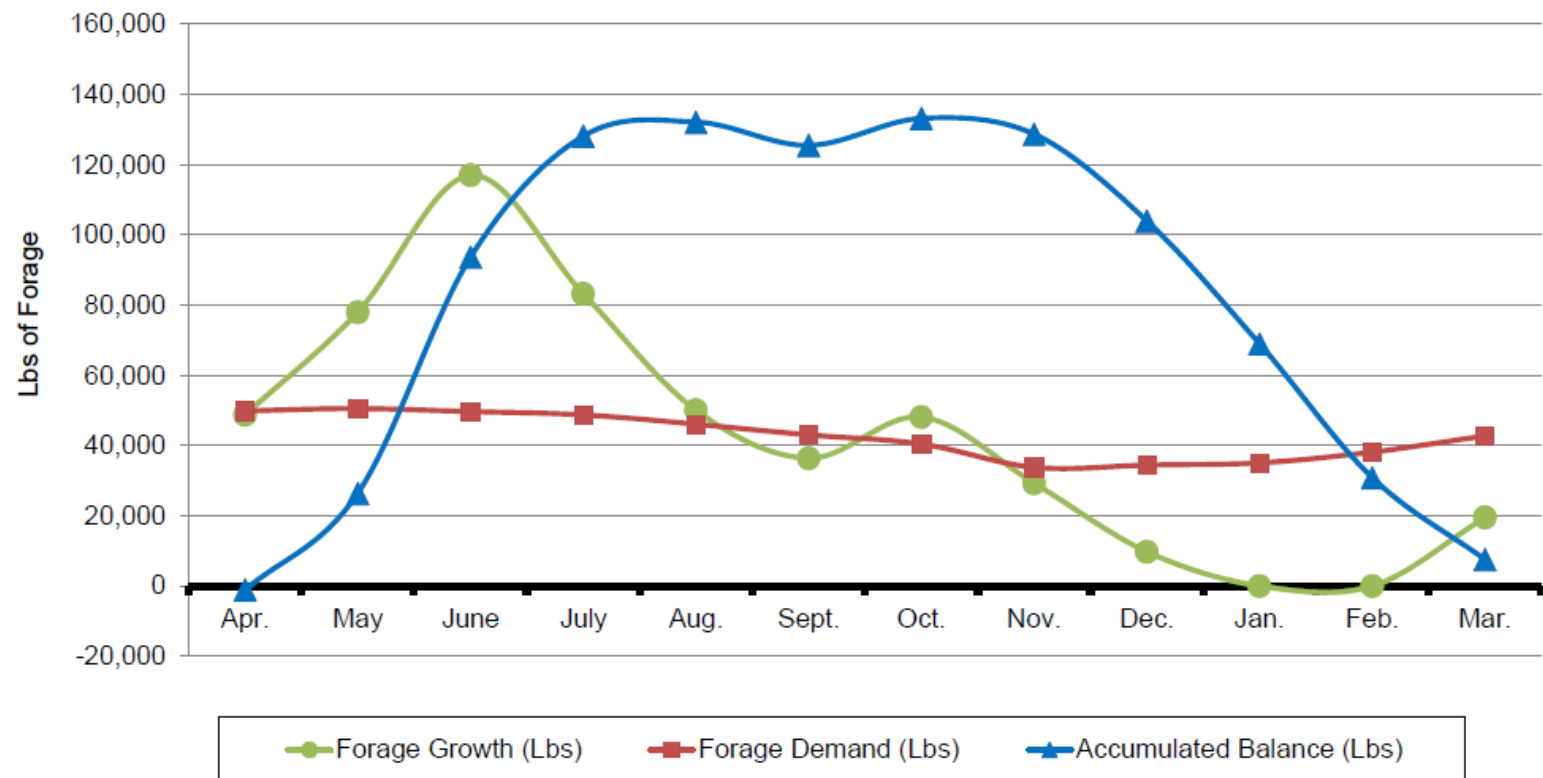


Grazing System Pasture Forage Growth vs. Demand and Accumulated Balance for:

Name: rotation

System ID:

Date:



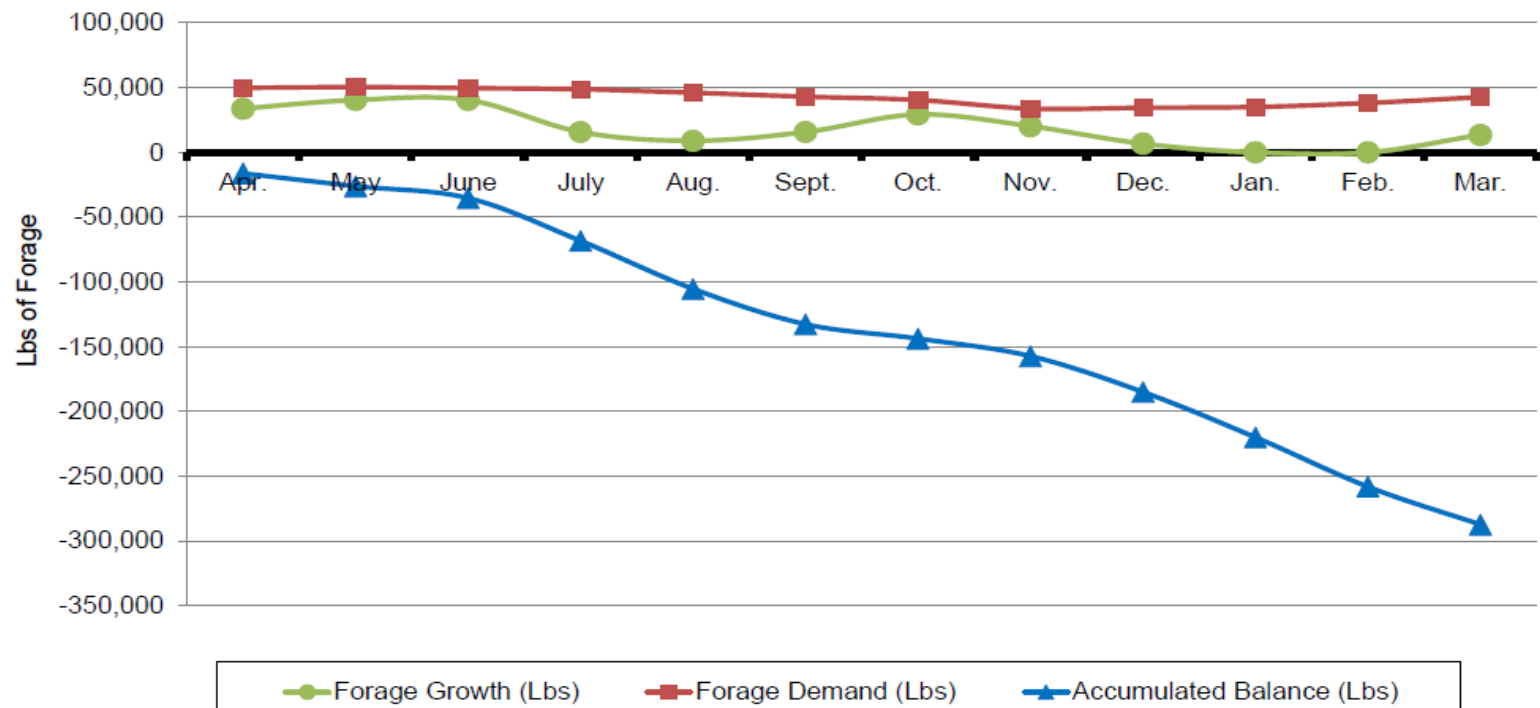


Grazing System Pasture Forage Growth vs. Demand and Accumulated Balance for:

Name: continuous

System ID:

Date:





It is NOT a SYSTEM

Continuous Grazed 100 acres fescue
3000 lbs production per acre per year
75% utilization
365 day need of 1350 lbs animal

Does not mean we are not supporting 40 animals



What our beef industry was built on

Cheap Land

Cheap Feed

Cheap Fuel

Cheap Fertilizer

Doing the same thing the same way and
expecting a different result





CSG

Calves on Fescue/Clover

In 6/23/2021 Avg 546 lbs

Out 7/17/2021 Avg 560 lbs

.6 pounds ADG





WSG The Good

Grows when I need it the most

Provides a longer rest period to the rest of the farm

Increased nutrition, better gains, better reconditioning

Increased conception rates

Less vet and mineral needs

Resilience

Sustainability



WSG

Calves on Big Bluestem, Indian Grass, Little Bluestem, Switchgrass and fescue.

Calves in 6/23/2021 480 Avg

Calves out 7/17/2021 523 Avg

1.79 lbs ADG



WSG

Calves on Big Bluestem, Indian Grass, Little Bluestem, Switchgrass, NO fescue.

Calves in 6/18/2022 513 Avg

Calves out 8/10/2022 687 Avg

3.34 lbs ADG



July 5, 2022 D3 Drought



USDA EQUAL OPPORTUNITY STATEMENT

The U.S. Department of Agriculture (USDA) prohibits discrimination in all its programs and activities on the basis of race, color, national origin, age, disability, and where applicable, sex, marital status, familial status, parental status, religion, sexual orientation, genetic information, political beliefs, reprisal, or because all or a part of an individual's income is derived from any public assistance program. (Not all prohibited bases apply to all programs.) Persons with disabilities who require alternative means for communication of program information (Braille, large print, audiotape, etc.) should contact USDA's TARGET Center at 202-720-2600 (voice and TDD).

To file a complaint of discrimination, write USDA, Director, Office of Civil Rights, 1400 Independence Avenue, SW, Washington, DC 20250-9410 or call (800) 795-3272 (voice) or (202) 720-6382 (TDD). USDA is an equal opportunity provider and employer.