



**WHO WE ARE**  
**Farmer-owned cooperative formed in 1929**





***Our Purpose is to Drive the Success of our  
Customers and Communities Through  
Exceptional Products and Services.***



# PROPANE



**99.9 MILLION**  
gallons of propane sold

# DIESEL



**115.5 MILLION**  
gallons of distillates sold



# GASOLINE



**52.0 MILLION**  
gallons of gasoline sold



# LUBRICANTS

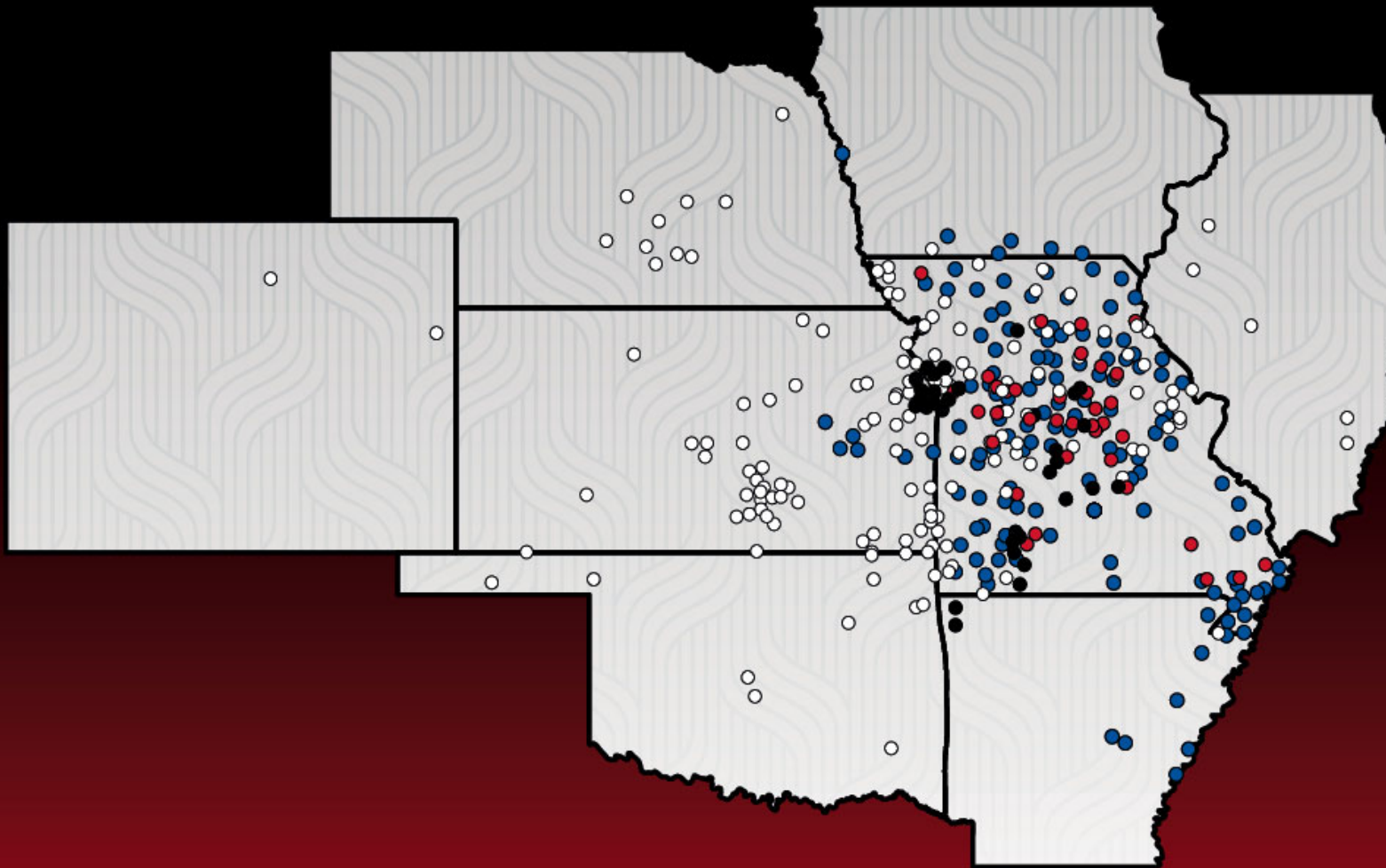


**1,062,419**  
gallons of lubricants

**230,205**  
pounds of grease



# RETAIL



Petro-Card 24

186

BreakTime

72

APM

255

BIG O TIRES

36

## PETRO-CARD 24



**68.0 MILLION**  
gallons of fuel sold

**186**  
locations



# BREAK TIME



**\$132.5 MILLION**  
in inside sales

**72**  
locations

**86.9 MILLION**  
gallons of fuel sold



# BIG O TIRES



**\$74.8 MILLION**  
in sales



**36**  
locations



# BLUSPHERE ENERGY



**534,000 AC KWHS**  
annual average



**40**  
solar installations

# APM



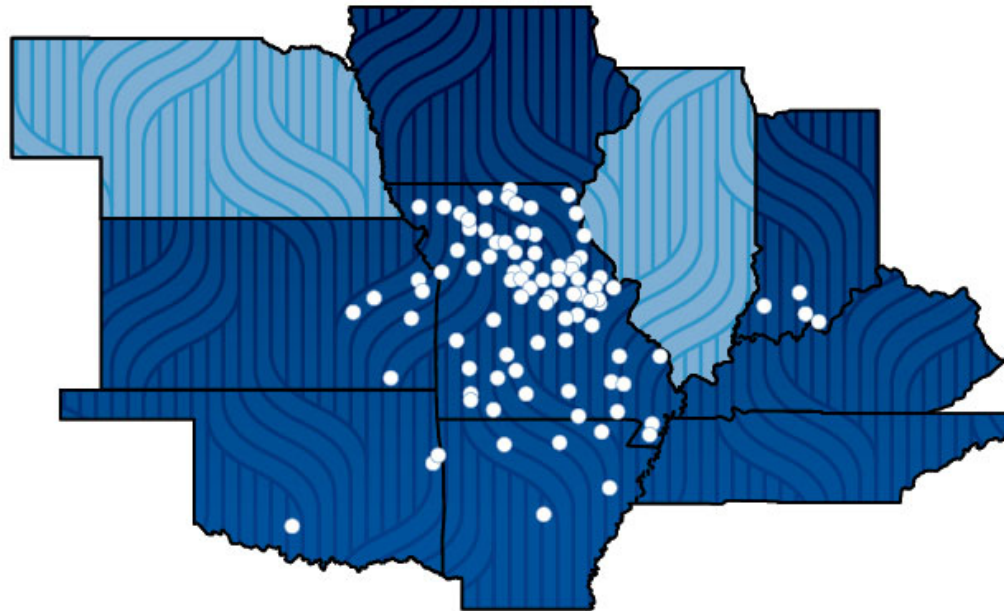
**255**  
fueling locations

**98.2 MILLION**  
gallons of fuel delivered



# THE MFA OIL FOUNDATION

The MFA Oil Foundation provides cash grants to support non-profit organizations in communities where MFA Oil has a significant concentration of members and employees. The grants, which are primarily funded by pre-tax, non-member income, help strengthen organizations dedicated to serving education, youth, humanitarian services and civic endeavors.



**\$300,220**

in grants awarded  
to 118 organizations

**\$3.6 MILLION**

approximate value of grants awarded  
since it was founded in 1998.

→ To apply for an MFA Oil Foundation  
grant, visit [mfaoil.com/foundation](http://mfaoil.com/foundation).

## BOARD OF DIRECTORS



### **STANDING LEFT TO RIGHT:**

**Marion Kertz,**  
District 4 – Southeast

**Mike Moreland,**  
District 5 – West Central

**Randy Pace,**  
District 8 – Mid-South

**Jake Taylor (Vice Chairman),**  
District 6 – Central

**Tony Dameron,**  
District 7 – East Central

**Chuck Weldon,**  
District 1 – Northwest

### **SITTING LEFT TO RIGHT:**

**Monte Fisher,**  
District 2 – Northeast

**Glen Cope (Chairman),**  
District 3 – Southwest



# MFA OIL COOPERATIVE MEMBERSHIP

## Enjoy the benefits of co-op membership.

Reap the rewards as we grow together. MFA Oil members earn patronage dividends on qualified purchases and can vote on delegates to represent their local plant who in turn elect MFA Oil Company's Board of Directors.

[Apply for Membership](#)

### Benefits

As an MFA Oil member, you can earn patronage dividends based on purchases you've made through your bulk fuel, propane and Petro-Card 24 accounts tagged with membership. Each year, the Board of Directors determines the dividend amount that will be disbursed to members based on company profits.

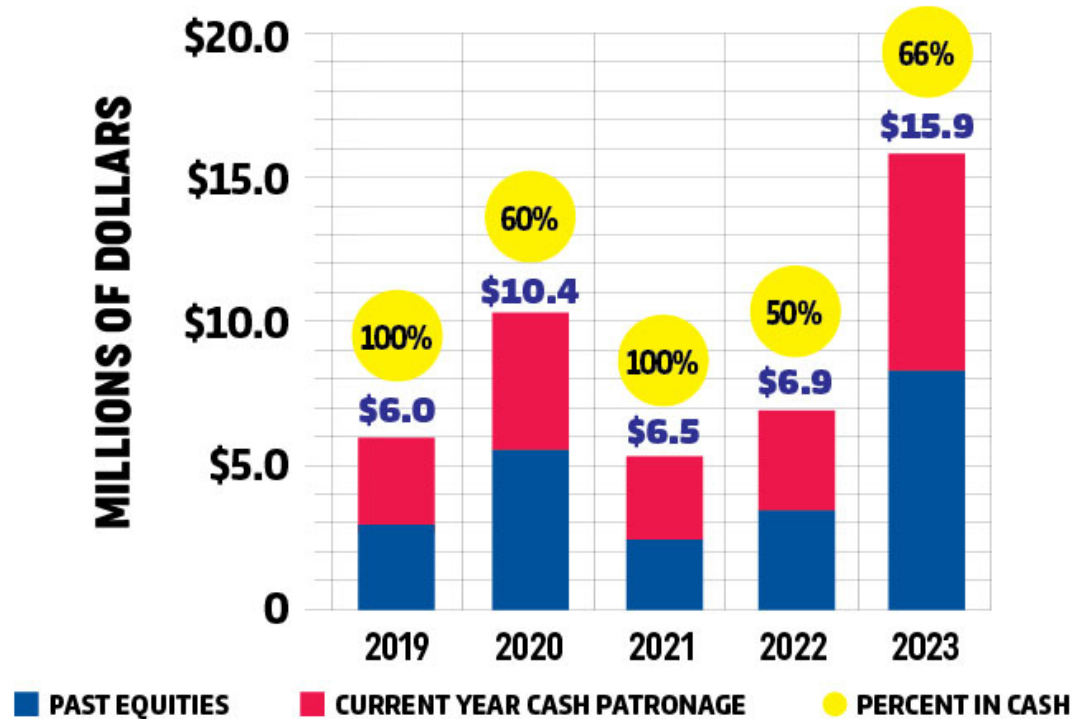


### Eligibility Criteria

You're eligible to become a co-op member if you meet these two requirements:

1. You are an agricultural producer or own land used for agricultural production.
2. You buy at least \$1,000 from MFA Oil bulk fuel, propane or Petro-Card 24 accounts tagged with membership during the company's fiscal year (Sept. 1 – Aug. 31).

## MFA OIL PATRONAGE PAID 2019-2023



**\$49.2 MILLION**

Cash paid to members  
in the last 5 years



# MFA Incorporated

Farmer-owned cooperative founded 1914

---

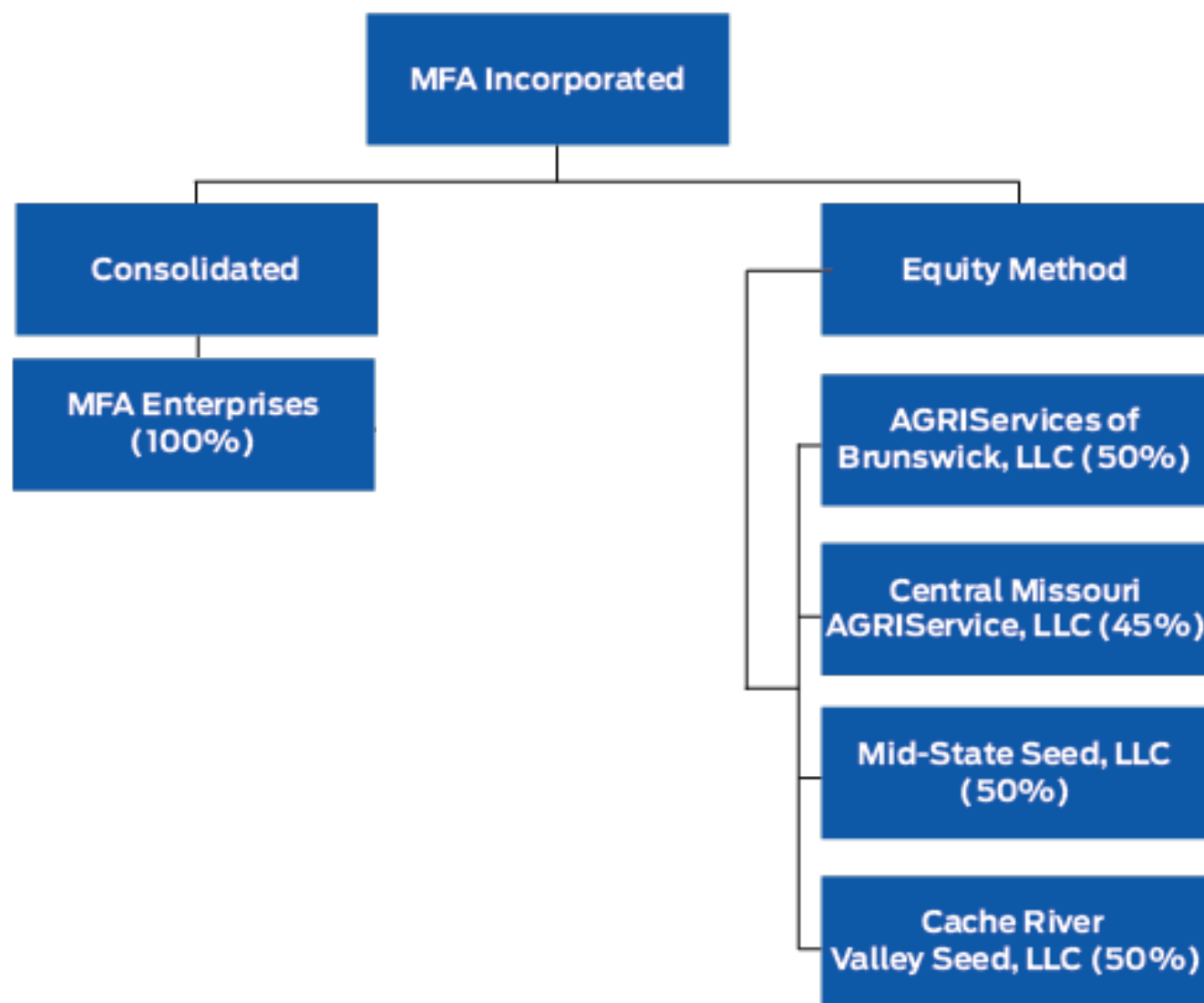




# Board of Directors













# Grain

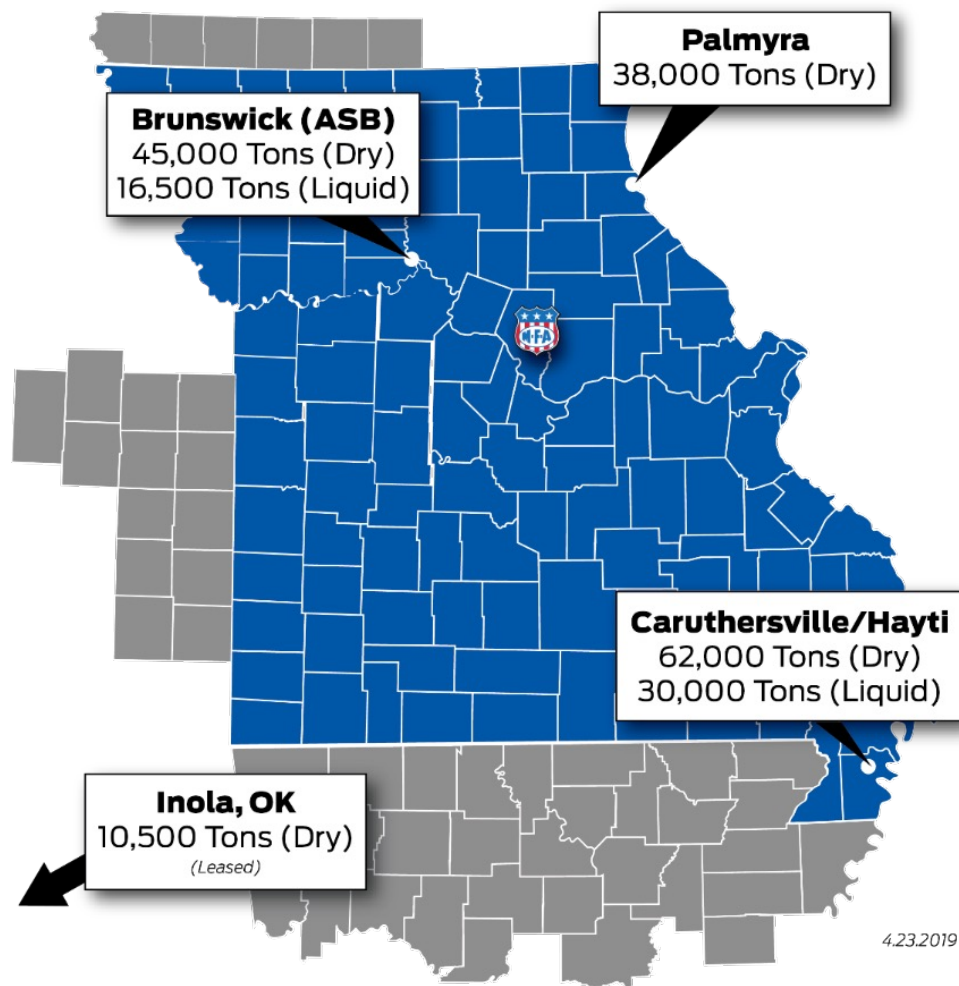
- 75 million bushels annually





# MFA Plant Foods

## Wholesale Facility Map

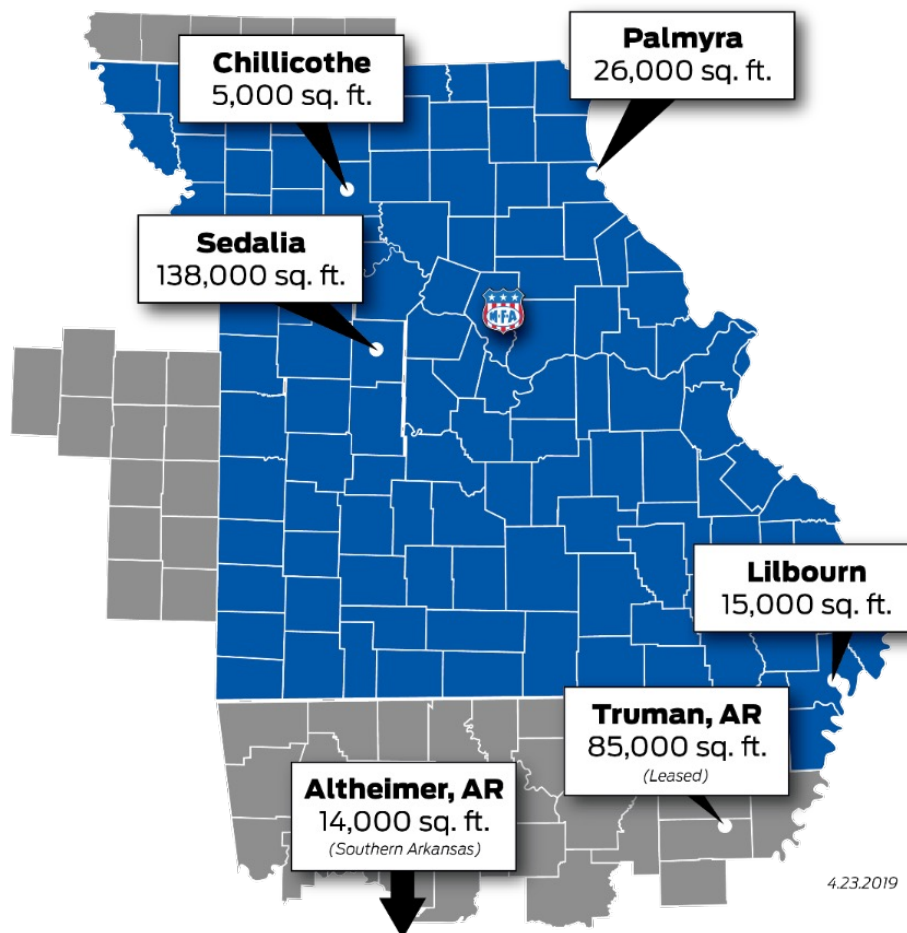






# MFA Warehouses

Crop Protection, Seed & Farm Supply



4.23.2019



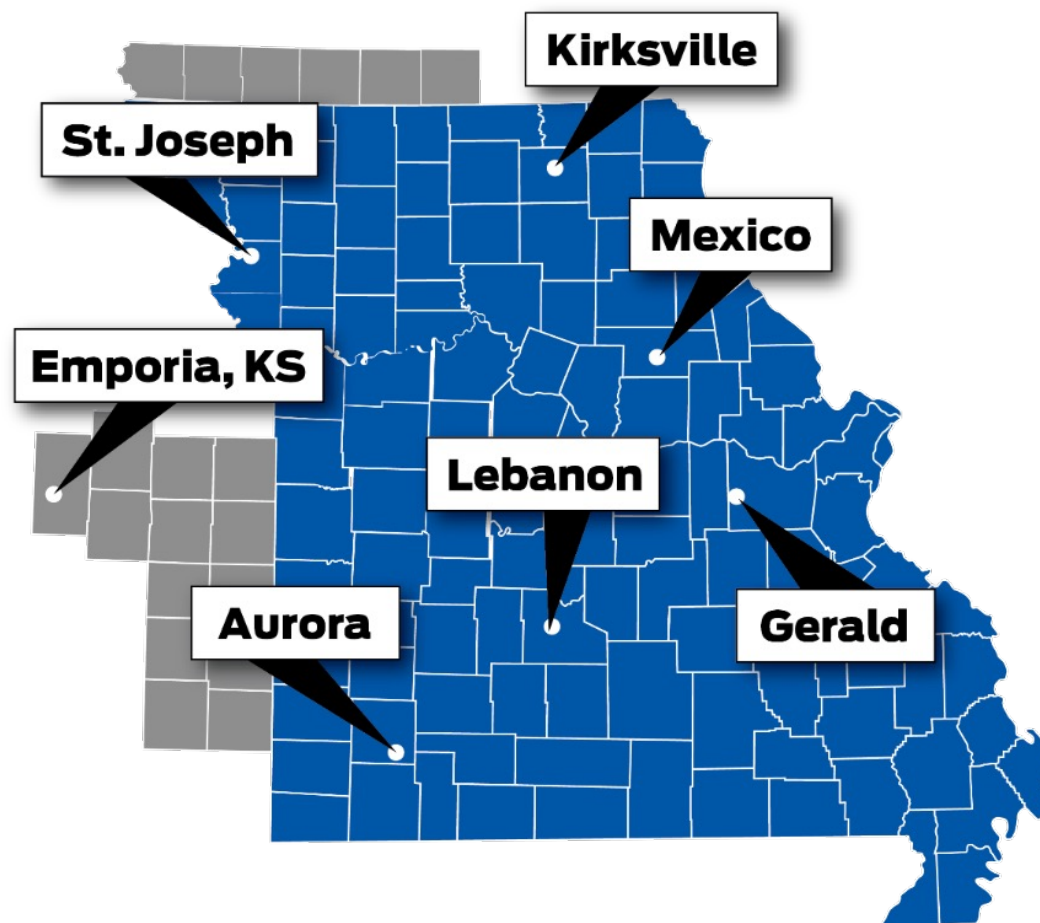
# Agronomy







# MFA Feed Mills





# Livestock







# 2024 CropLife 100

**\$201 Million to \$1 Billion** IN RETAIL SALES

Rank/Company	Headquarters Location	# States Served	# Retail Outlets	Years in CropLife 100	% Crop Protection Sales	% Fertilizer Sales	% Seed Sales	% Custom App Sales
8 MFA	Columbia, MO	4	167	31	19%	65%	11%	5%
9 Agtegra Cooperative	Aberdeen, SD	2	65	33	22%	57%	15%	6%
10 Co-Alliance	Indianapolis, IN	3	45	24	24%	62%	9%	5%
11 NEW Cooperative	Fort Dodge, IA	1	68	14	22%	64%	10%	4%
12 Central Valley Ag Cooperative	York, NE	3	60	20	23%	63%	10%	4%
13 Ceres Solutions Cooperative	Crawfordsville, IN	2	44	13	25%	60%	9%	6%
14 Hefty Seed	Baltic, SD	11	50	22	73%	3%	24%	—
15 Valley Agronomics	Nampa, ID	4	35	12	27%	67%	3%	3%
16 Effingham Equity	Effingham, IL	2	26	34	24%	59%	10%	7%
17 Ag Partners Coop	Goodhue, MN	2	20	2	20%	54%	11%	15%
18 Aurora Cooperative	Aurora, NE	6	80	32	42%	44%	8%	6%
19 Sunrise Cooperative	Fremont, OH	1	26	7	27%	57%	10%	6%
20 Southern States Cooperative	Richmond, VA	8	83	33	17%	65%	14%	4%
21 BRANDT	Springfield, IL	2	18	40	26%	48%	20%	6%
22 United Cooperative	Beaver Dam, WI	1	17	15	22%	61%	16%	1%
23 Landus Cooperative	Des Moines, IA	2	66	7	22%	68%	5%	5%
24 The McGregor Co.	Colfax, WA	3	36	40	40%	53%	5%	2%
25 Grow West	Woodland, CA	1	12	19	44%	55%	1%	—
26 United Prairie	Tolono, IL	1	14	12	25%	59%	9%	7%
27 Mid Kansas Cooperative	Moundridge, KS	4	60	15	20%	63%	12%	5%
28 Buttonwillow Warehouse	Bakersfield, CA	1	10	21	47%	49%	2%	2%
29 AgState	Cherokee, IA	1	40	17	23%	60%	12%	5%

COOPERATIVES: BLUE DEALERSHIPS: WHITE







